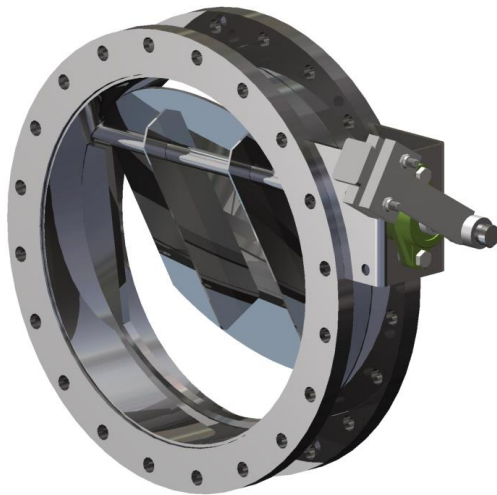


Check valve – Serie 600

Swedspjäll

Made in Sweden



DESCRIPTION

Serie 600 are a check valve for gas applications with adjustable counterweight to balance the disc.

Serie 600 are equipped with flanged ball bearing on both side, but can also built as Serie 150, with one side inner bearing.

Standard are whit out adjustable shaft seal, but on request stuffing box are possible on both sides.

RANGE OF APPLICATION

For air, hotair and flue gases.

Max. temperature: *500° C

Max. design pressure: 0,5 bar (g)

(*For higher temperatures, please contact us for more information)

TECHNICAL INFORMATION

Serie 600 are equipped with ball bearings on one or both sides.

Construction design either with adjustable stuffing box ore bearing mounted direct to the body, same as Serie 300.

With stuffing box no leaking on the shaft will occur to atmosphere.

With direct bearings the friction are less that's give easier balance with the counterweight.

The counterweight are balance the weight of the disc to prevent low open pressure and low pressure drop.

Serie 600 can be manufactured in square or round design, with one or more shafts.

Normally it's equipped with our standard flanges or flanges according to customer request, but it can also be manufactured with welded ends or wafer type.

(Sealing systems – see separate sheet)

BENEFITS

Easy to balance due to the external adjustable counterweight

Low friction with the external ball bearings

Check valve – Serie 600

Swedspjäll

REFERENCE PHOTOS

