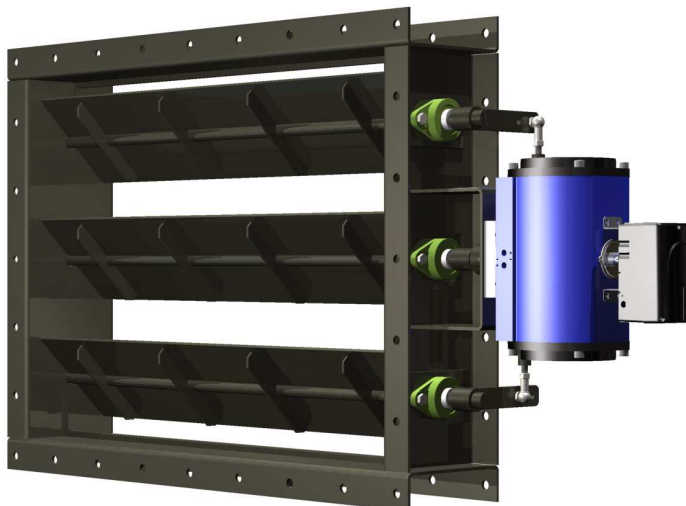


# Multi Louvre Damper – Serie 300

**Swedspjäll**
*Made in Sweden*


## DESCRIPTION

**Serie 300** dampers are of the multi louvre type with multiple shafts. Serie 300 is a very robust construction equipped with flanged ball bearings on both sides. No bearings inside the gas flow.

## RANGE OF APPLICATION

For air, hot air and flue gases.

Max. temperature:       \*350° C

Max. design pressure:    0,5 bar (g)

(\*For higher temperatures, please contact us for more information)

## TECHNICAL INFORMATION

The Serie 300 dampers are manufactured with ball bearings on both sides.

No adjustable stuffing boxes that raises the required torque when having multiple shafts.

Serie 300 can be manufactured in square or round design.

The damper can be operated with electric or pneumatic actuator (on/off operation or regulation/control) and also with hand gear.

Normally it is equipped with our standard flanges or flanges according to customer request, but it can also be manufactured with weld ends or wafer type.

(Sealing systems – see separate sheet)

## BENEFITS

Suitable for use where space is limited because the height of the blade is normally shorter than the mounting dimension. Serie 300 is best suited for use where multiple shafts are needed.

# Multi Louvre Damper – Serie 300

**Swedspjäll**

01-D-310-03

## REFERENCE PHOTOS

