

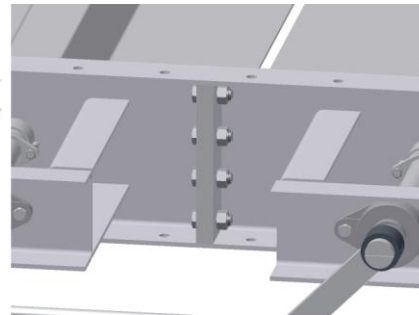
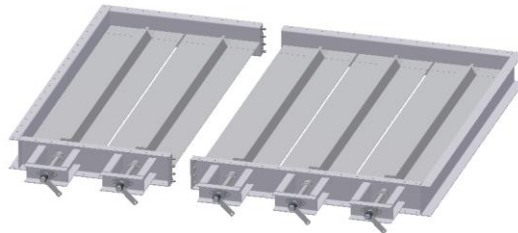
Assembling

The dampers are delivered in 2-parts and must be assembled before installation in the duct.

1. Place the damper part on a steel bed, the steel bed must be horizontal and not twisted.
Don't lift in the steel beams, lift in the damper house or in the shafts, no twist when lifting



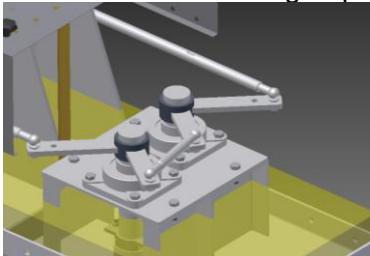
2. Remove the steel beam between the house parts
3. Apply sealing between the house parts (use the Silicon type that is packed in the wood box with the bolts and nuts)



4. Use the bolts M 20 from the wooden box and bolt the 2 houses together. Use 160 Nm



5. You can weld the flanged part together ore use sealing, depends on the deviation.



6. Mounting the control arms
Don't loosen the nuts from the control arms – the distance must be fixed

Mounting the damper in the duct, see Operating and Maintenance instructions.