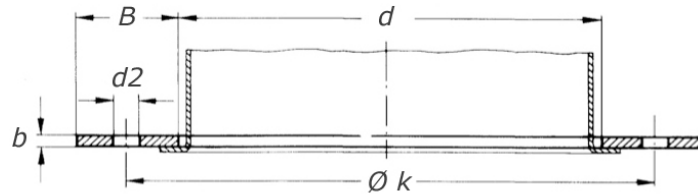
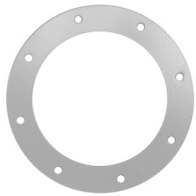


flat flange DIN 24154/R2, T2

[short name: FFR2*](#)

(series 2/ part II)



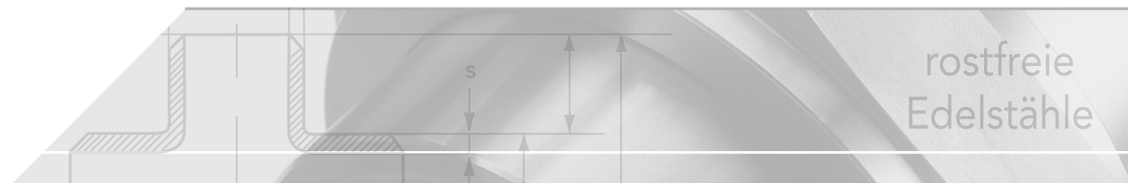
technical product sheet

DN	d	B	b	k	d2	M	kg	Art.-Nr.
71	73	30	6	110	9,5	4 x M8	0,440	FFR2-071-1
80	82	30	6	118	9,5	4 x M8	0,480	FFR2-080-1
80	82	30	6	118	9,5	4 x M8	0,000	FFR2-080-4
90	92	30	6	128	9,5	4 x M8	0,000	FFR2-090-1
90	92	30	6	128	9,5	4 x M8	0,530	FFR2-090-2
100	102	30	6	139	9,5	4 x M8	0,570	FFR2-100-1
100	102	30	6	139	9,5	4 x M8	0,000	FFR2-100-4
112	114	30	6	151	9,5	4 x M8	0,630	FFR2-112-1
125	127	30	6	165	9,5	4 x M8	0,680	FFR2-125-1
125	127	30	6	165	9,5	4 x M8	0,680	FFR2-125-4
140	142	35	6	182	11,5	8 x M10	0,880	FFR2-140-1
140	142	35	6	182	11,5	8 x M10	0,880	FFR2-140-4
150	152	35	6	191	11,5	8 x M10	0,930	FFR2-150-1
150	152	35	6	191	11,5	8 x M10	0,930	FFR2-150-4
160	162	35	6	200	11,5	8 x M10	0,980	FFR2-160-1
160	162	35	6	200	11,5	8 x M10	0,000	FFR2-160-2
180	182	35	6	219	11,5	8 x M10	1,090	FFR2-180-1
180	182	35	6	219	11,5	8 x M10	0,000	FFR2-180-2
200	203	35	6	241	11,5	8 x M10	1,190	FFR2-200-1
200	203	35	6	241	11,5	8 x M10	0,000	FFR2-200-2
200	203	35	6	241	11,5	8 x M10	1,210	FFR2-200-4
224	227	35	6	265	11,5	8 x M10	1,320	FFR2-224-1
224	227	35	6	265	11,5	8 x M10	0,000	FFR2-224-4
250	253	35	6	292	11,5	8 x M10	1,450	FFR2-250-1
250	253	35	6	292	11,5	8 x M10	1,450	FFR2-250-2
250	253	35	6	292	11,5	8 x M10	1,480	FFR2-250-4
280	283	40	8	332	11,5	8 x M10	2,500	FFR2-280-1
300	303	40	8	349	11,5	8 x M10	2,660	FFR2-300-1
300	303	40	8	349	11,5	8 x M10	2,660	FFR2-300-4
315	318	40	8	366	11,5	8 x M10	2,820	FFR2-315-1
315	318	40	8	366	11,5	8 x M10	2,820	FFR2-315-2
355	358	40	8	405	11,5	8 x M10	3,090	FFR2-355-1
355	358	40	8	405	11,5	8 x M10	0,000	FFR2-355-4
400	404	40	8	448	11,5	12 x M10	3,430	FFR2-400-1
400	404	40	8	448	11,5	12 x M10	3,215	FFR2-400-4
450	454	40	8	497	11,5	12 x M10	3,820	FFR2-450-1

DN	d	B	b	k	d2	M	kg	Art.-Nr.
450	454	40	8	497	11,5	12 x M10	0,000	FFR2-450-4
500	504	40	8	551	11,5	12 x M10	4,220	FFR2-500-1
500	504	40	8	551	11,5	12 x M10	4,220	FFR2-500-4
560	564	50	8	629	14,0	16 x M12	5,900	FFR2-560-1
560	564	50	8	629	14,0	16 x M12	5,900	FFR2-560-4
600	605	50	8	665	14,0	16 x M12	6,310	FFR2-600-1
600	605	50	8	665	14,0	16 x M12	6,310	FFR2-600-4
630	634	50	8	698	14,0	16 x M12	6,590	FFR2-630-1
630	634	50	8	698	14,0	16 x M12	0,000	FFR2-630-4
630	634	50	8	698	14,0	16 x M12	0,000	FFR2-630-N
710	714	50	8	775	14,0	16 x M12	7,380	FFR2-710-1
710	714	50	8	775	14,0	16 x M12	0,000	FFR2-710-2
710	714	50	8	775	14,0	16 x M12	7,380	FFR2-710-4
710	714	50	8	775	14,0	16 x M12	0,000	FFR2-710-N
800	804	50	8	861	14,0	24 x M12	8,190	FFR2-800-1
800	804	50	8	861	14,0	24 x M12	8,330	FFR2-800-4
900	904	50	8	958	14,0	24 x M12	9,180	FFR2-900-1
1000	1005	50	8	1067	14,0	24 x M12	10,180	FFR2-A00-1
1000	1005	50	8	1067	14,0	24 x M12	0,000	FFR2-A00-4
1120	1125	60	10	1200	18,0	32 x M16	16,900	FFR2-B00-1
1120	1125	60	10	1200	18,0	32 x M16	0,000	FFR2-B00-4
1250	1255	60	10	1337	18,0	32 x M16	18,820	FFR2-C00-1
1250	1255	60	10	1337	18,0	32 x M16	18,820	FFR2-C00-4
1400	1405	60	10	1475	18,0	32 x M16	21,040	FFR2-D00-1
1600	1605	60	10	1675	18,0	40 x M16	23,840	FFR2-E00-1
1800	1805	60	10	1875	18,0	40 x M16	26,800	FFR2-F00-1
2000	2005	60	10	2073	18,0	40 x M16	29,760	FFR2-G00-1

available material: 1.4301

Flanges > other > flat flanges > DIN 24154 > series 2 / part II



Flat flange for air ventilation systems

DIN 24154/ series 2, part 2

DIN-version July 1990

Tolerances inner diameter

nominal size	tol.
71 - 125	+ 1,0 mm
140 - 500	+ 1,5 mm
560 - 2000	+ 2,0 mm